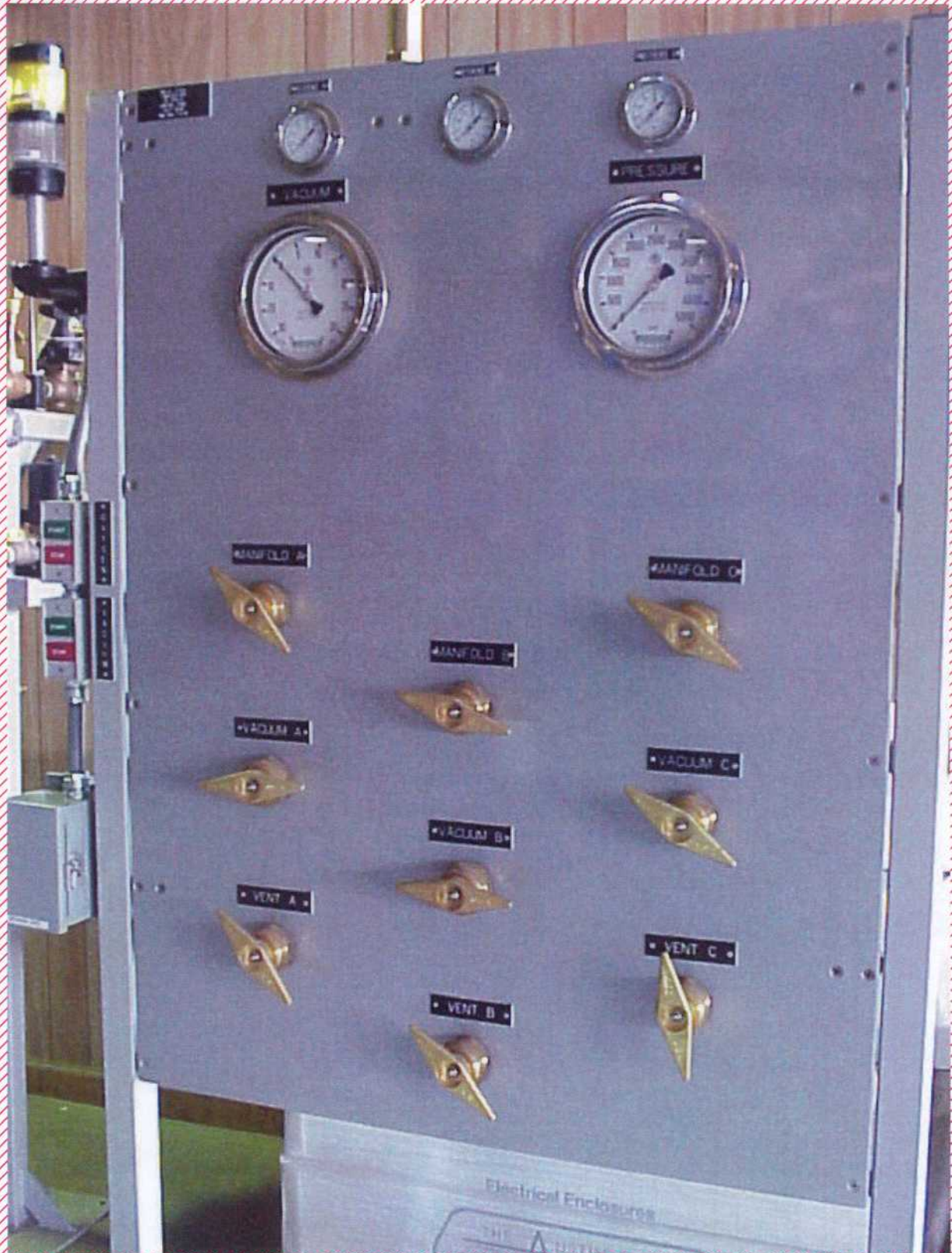
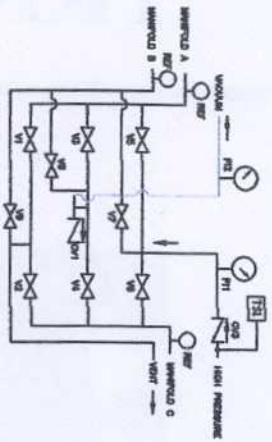


TRI-PLEX PANEL TPX-4003

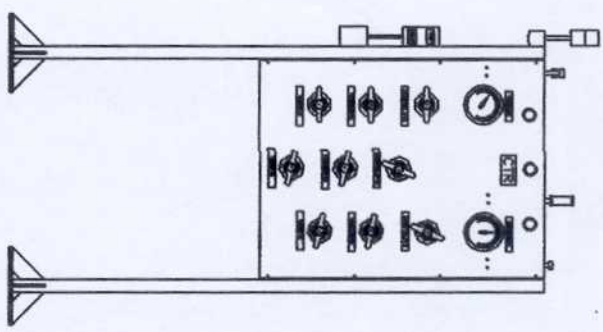
TRIPLE MANIFOLD





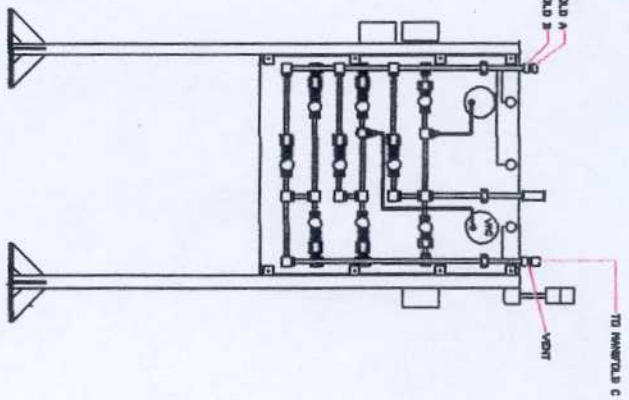
NOTE: RELIEF SAFETY ON HIGH PRESSURE SIDE
 NOTE: REFERENCE GAUGES ARE OPTIONAL EQUIPMENT.
 PRODUCT LINE BY OTHERS SUBJECT OUTLINE MOUNTING OF RELIEF VALVE.

NOTE:
 ASS X 3/8" S.S. PIPING
 DWTEN
 1/2" OC HEAVY BRASS



FRONT VIEW

NOTE:
 FOOTPLATE BRULER FOR
 1/2" X 3" ANCHOR BOLTS
 ON REAR FRS PLATE



BACK VIEW

NOTE: VALVES, GAUGES,
 AND SUPPORTS NOT SHOWN

PARTIAL SIDE VIEW

REV.	REVISION DESCRIPTION	DATE	BY	CHKD.
1	REVISED TO SHOW 1/2" X 3" ANCHOR BOLTS ON REAR FRS PLATE	10/1/79	WJ	WJ
2	REVISED TO SHOW 1/2" X 3" ANCHOR BOLTS ON REAR FRS PLATE	10/1/79	WJ	WJ
3	REVISED TO SHOW 1/2" X 3" ANCHOR BOLTS ON REAR FRS PLATE	10/1/79	WJ	WJ
4	REVISED TO SHOW 1/2" X 3" ANCHOR BOLTS ON REAR FRS PLATE	10/1/79	WJ	WJ
5	REVISED TO SHOW 1/2" X 3" ANCHOR BOLTS ON REAR FRS PLATE	10/1/79	WJ	WJ
6	REVISED TO SHOW 1/2" X 3" ANCHOR BOLTS ON REAR FRS PLATE	10/1/79	WJ	WJ
7	REVISED TO SHOW 1/2" X 3" ANCHOR BOLTS ON REAR FRS PLATE	10/1/79	WJ	WJ
8	REVISED TO SHOW 1/2" X 3" ANCHOR BOLTS ON REAR FRS PLATE	10/1/79	WJ	WJ

DATE	10/1/79
BY	WJ
CHKD.	WJ
TITLE	TRI-PLEX PANEL V/O VACUUM BREAK
QUANTITY	1001125
REV.	1
NO.	10729